

HARTON

S-POD

The Harton S-Pod

To extend our range Harton have introduced the S-Pod.

The S-Pod is a GRP housing with a built in water storage tank and plant room, the housing is fully fitted out in our workshop with booster pumps, pipework, electrical controls, lighting, power and frost protection and delivered to site as the complete package.

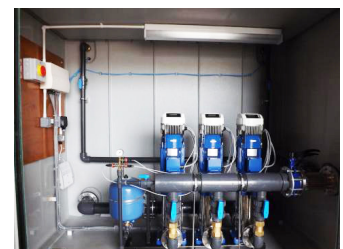
The S-Pod is designed to be placed above ground on a pre-formed concrete base; services are supplied to the S-Pod for incoming mains, out-going boosted water and electrical power.

The S-Pod can be supplied in various different storage capacity's and pump duty's to meet the demand required on site, all units are bespoke to suit customers requirements.

All materials and pumps are WRAS approved; pumps are controlled by variable speed drives which can offer control of up to 8 pumps, energy efficiency, error log with date and time stamp, diagnostic menu to view temperature, current and quality of power.

BMS can be incorporated via the MODBUS interface as standard.

The S-Pod complements our well established Pod range of underground plant rooms with the flexibility to install above ground



HARTON

TO GIVE YOU THAT NEEDED BOOST

GET IN TOUCH

Tel: 020 8310 0421

Fax: 020 8310 6785

Email: office@hartonservices.com

Hartons Services Limited

Unit 6, Thistlebrook Industrial Estate Abbey Wood, London SE2 9RB